



Indiana Power Plant



LOCATION | Indiana

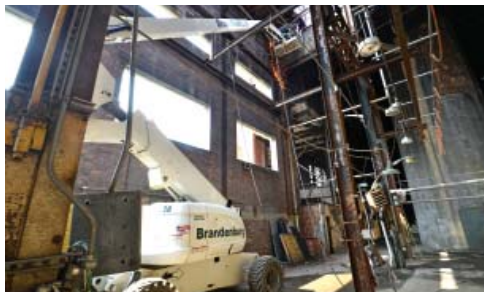
FACILITY TYPE | Power Generation

PROJECT BACKGROUND

The Power Station's original unit was built in 1918, and three other operating units were added between 1944 and 1951 creating a 160-megawatt plant. Those coal units were retired in 2011.



Brandenburg was contracted to demolish the plant in 2012. The decommissioning process began with asbestos and lead removal, while salvaging equipment that could be recycled and repurposed. During the demolition process the powerhouse, transmission towers, and auxiliary structures including four boiler units, three turbines, two conveyors, and precipitators were safely removed. The basement was backfilled and the site graded and restored to natural habitat.



In June 2013, on the property adjacent to the old Power Station, a new gasification combined cycle, 618-megawatt facility began commercial operations.



SCOPE OF WORK

Asbestos abatement

Hazardous waste removal

Asset recovery

Recycling

Demolition

Backfilling

Site grading

Final restoration

Brandenburg®